

C.S. MACCHINE PER CAFFÈ Srl



Ducale

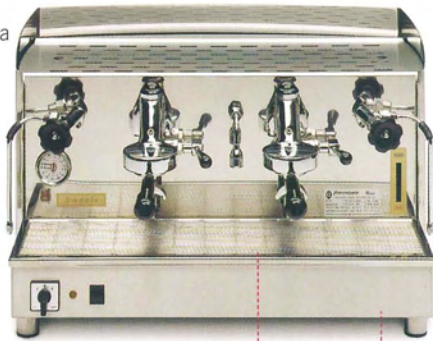


AFFIDABILE, ELEGANTE COMPLETA

RELIABLE, ELEGANT, COMPLETE
ZUVERLÄSSIG, ELEGANT, KOMPLETT
FIABLE, ÉLÉGANTE, COMPLÈTE
FIABLE, ELEGANTE, COMPLETA

Ducale

Ducale levetta
Lever operated Ducale
Ducale-Hebel
Ducale levier
Ducale de palanca



MACCHINA PER CAFFÈ ESPRESSO

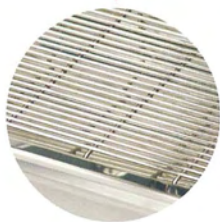
ESPRESSO COFFEE MACHINE
ESPRESSO-MASCHINE
MACHINE À CAFÉ EXPRESSO
CAFETERA



Carrozzeria Deluxe
Deluxe housing
Gehäuse Deluxe
Carrosserie Deluxe
Chasis Deluxe



Doppio manometro
e rubinetto vapore
Dual manometers
and steam knob
Doppelter Druckmesser
und Dampfventil
Double manomètre
et robinet vapeur
Manómetro doble
y grifo de vapor



Griglia portatazzine
inferiore
Bottom drip tray grill
Unteres
Tassenabstellgitter
Grille porte-tasses
inférieure
Rejilla portatazas inferior



Ducale elettronica:
pulsantiera
Electronic Ducale:
push-button panel
Ducale mit Elektronik: Tastatur
Ducale électronique:
boîtier de commande
Ducale electrónica: botones



Ducale pulsante:
interruttore erogazione
Push button controlled Ducale:
brewing switch
Ducale mit Taste:
Ausgabeshalter
Ducale bouton-poussoir:
interrupteur débit
Ducale de botón: botones

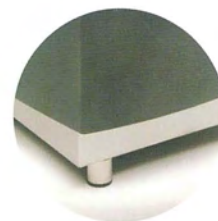
CARATTERISTICHE / Specifications / Technische Daten TECNICHE / Caractéristiques techniques / Características técnicas

Modello Model Modell Modèle Modelo	Capacità caldaia Boiler capacity Fassungsvermögen Wassertank Capacité chaudière Capacidad caldera	Potenza resistenza Power resistor Widerstandsleistung Puissance résistance Potencia resistencia	Voltaggio Voltage Spannung Voltage Voltaje
--	--	---	--

1G elettronica 1G levetta 1G pulsante	4,7 lt	1800 W 2700 W	110 V a.c. 230 V a.c. 400 V a.c. 3PH-N-PE
2G elettronica 2G levetta 2G pulsante	10,4 lt	3500 W	230 V a.c. 400 V a.c. 3PH-N-PE
3G elettronica 3G levetta 3G pulsante	19,7 lt	4000 W	230 V a.c. 400 V a.c. 3PH-N-PE



Carrozzeria Retrò / Retro housing
Gehäuse Retrò
Carrosserie Rétro / Chasis Retrò



Carrozzeria standard / Standard housing / Standardgehäuse / Carrosserie standard / Chasis estándar

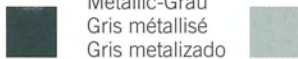
C B A	Dimensioni (cm) Dimensions (cm) Abmessungen (cm) Dimensions (cm) Dimensiones (cm)	Peso netto Net Weight Nettogewicht Poids Net Peso neto	Peso lordo Gross Weight Bruttogewicht Poids Brut Peso bruto
	A B C		

1G	48 x 53 x 45	45 Kg	50 Kg
2G	77 x 53 x 45	66 Kg	72 Kg
3G	100 x 53 x 45	86 Kg	94 Kg

Colori
Colours / Farben
Couleurs / Colores

Nero gofrato
Embossed black
Schwarz gaufriert
Noir gaufré
Negro gofrado

Grigio metallizzato
Metallized grey
Metallic-Grau
Gris métallisé
Gris metalizado



Kanawati Enterprises
94 Railroad Avenue
Hackensack, NJ 07601
Tel. 866 265-9569
Fax 201 343-1794
www.kebeverage.com
sales@kebeverage.com

